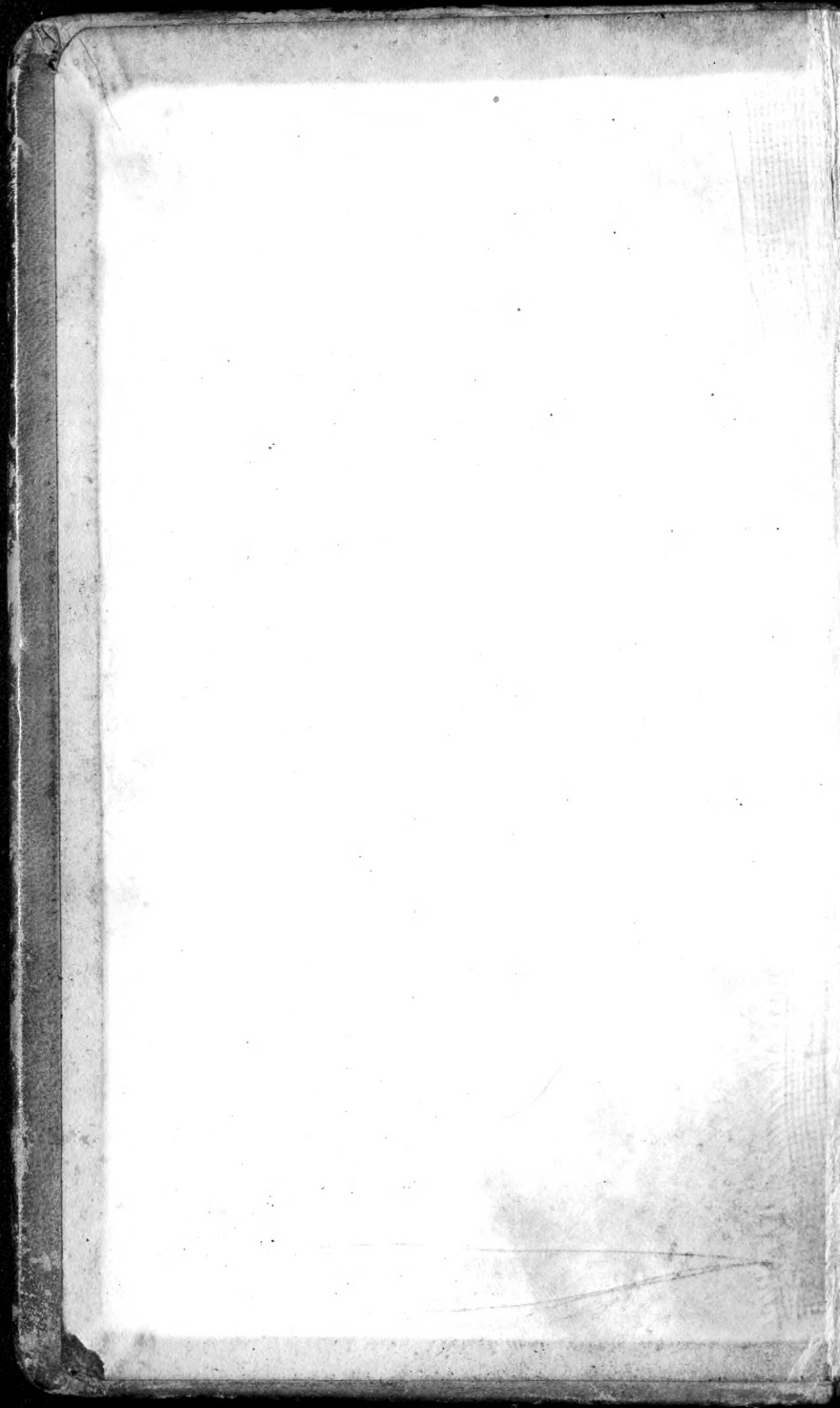


156
FIELD NOTE BOOK

CROCKER LAND EXPEDITION

1913 - 1915

No. 65



LIBRARY
MUSEUM OF
NATURAL HISTORY

1917

W. B. Mackyulan

Etah

Go. Greenland

1913-1917.

359 60

To Alexander	8 nautical miles
Cape Isabella	31 " "
Cape Sabine	42 " "
Base line	9100 feet long

Base Line $\frac{1}{2}$ mile (2640)

Western end to cairn Provision Point	337° 03'
To Star Island	333° 35'
Kover Island	327 17
Radcliffe Island	320 15
Purkin Knob	315 9
Cape Alexander	314 37 30
To Crimson Palace (top)	305 1
Western edge Pa	251 273 22
Eastern " "	247 6253-21
Western " " Butte	251
Eastern " "	247 5
Pec-a-vaah-to Point (Cairn Seal cliff)	222 35
To River Point	210 8
" House	175 29
To Depth Cove	89 19
Base Line Bears	243 14

From Eastern End Base Line

Star Island	344	12	30
Knorr "	338	41	
Redcliffe "	333	24	
Pumphrey Knob	331	40	
Hayes Pa	324	34	
Dog Island	288	25	30
Eastern End King Pa.	261	24	30
Pe-a-na-to Point	213	40	
Head of Glacier South Side	210	23	30
Western end of Butte	251	3	30
Eastern Elevation "	6	23	30
Eastern End Butte	246	10	
Elevation Vertical cliff South side	5	21	
" South side glacier (Hell limit)	2	12	
Elevation Ice cap	252	30	
House	77	38	30
Thermometer spill Can.	45	14	30
Elevation	7°	36	
Camp Island	17	35	
Elevation of high spill south (Meridian Hill)	7	15	
Elevation north side fjord			

Star Island

at 5 ^h 41 ^m Sun	5°	44'
Cape Alexander	316	39
Elevation	1	29
Cape Kendrick	293	30
Elevation	1	56
Crimson Palace	287	19
Elevation	2	21
Sonnatag Mtn.	245	
Elevation	3	18
Hayes Pa.	188	
End Island Pa.	174	42
Wog Island	167	42
House	151	3
Provision Point	149	20
Cape Ahlsen	90	33
Sunrise Point	62	14
Thunmueler Hill	124	18
Elevation	5	8
Rock Harbor	96	20

W. 54^s Slow
Chs

April 26, 1917

Watch 46 sec. slow on Bond

" 27 " " " Apr. 29

Merby

Western end Halsbury's Isle	307° 1'
Eastern " " "	304° 15'
W. end Kee-eti Isle	301 21
E " " "	270 6
W. " Herbert "	267 12
S " Pa	253 41
all - \odot at 9 ^h 20 ^m 30 ^s	22 25 30 ^{all}

Obs. Merby all \odot 26° 14' 30"

To Hanging Glacier	213 35
To Glacier east side find	196 3-30
" " No. 3	190 36 30
" Point west side	185 42

Merby Point

To Sa-wooya	246 7-30
" Village	186 30
" Western Point	34 19

Just one hour (5 miles) to
point below Petrarika

Three miles from "Lo-doi-ya" there
is a hanging glacier and cirque.
Four miles a tide-water glacier
 $\frac{3}{4}$ wide at face, $\frac{1}{2}$ in valley

Five large glaciers west side
Kee-ate Island

Five miles from a third glacier
on east side Verby-tind



Petermann Village

Highest point Halsey's Hill	2897
W. point Northumberland	25445
P. south of glacier	23225
P. west	2444

End of Cape 1.8 miles

Cape Alex	62	25
Inner end Sutherland I	65	13
C. west Subvictory	67	13
Subvictory	74	6
W. End Glacier	78	15 30
P south end of H B	81	53
P north of end A	94	18



P south of Village	223	40
P Goodwin's	228	34 30
Climson Cliff	228	45
Centre Halsey's	288	30
W End Keate I	285	45 30
C. Elizabeth	41	54
Alt 2 1200	25	55 30
Bearing	275	54 30

Line Sights - Saturday

at 5 30 15	⊙	15 47
5 32 30		15 40
5 34		15 36
5 36 35		15 37
5 37 16		15 37
5 41		15 13
5 43 45 B 13° 8'		15 9

One hundred yds W of Saturday

Peterson's Point	261 24 30
S End Long Harbor P.	251 9
Long Harbor and end glacier	237
Wend Glacier	213 25

May 1, 1917

Watch 20 sec. slow

S.W. End Littleton Island

C. Alex	270 27
S. End Glacier	254 53
Cann Pat	253
C. Venardich	250 31
Sunrise Point	249 52
C. Sabine	46 31
C. Herschel	27 10
Wade Point	19 15
SW. End Eider Duck I.	97 6
W. Gary's Rock	86 25

Cain Point

105-6

Height 431 feet
 Eastern Cain Littleton Island

C. Alex	283	16 30
Depression	26'	
Glacier to Camp Palace	266	
Wef.	24	30"
	265	59
Summit Point and first point north	274	
C. Ahlstrom	276	1 30
Wireless Cliff	240	33
Criquet Cove	191	25 30
W. Point & B. Cove	158	56
Cove back of Palace. Under Quarters	156	39
Outer end Point	144	54
Yow-yardi	133	
Syrphaloon Cliff	121	19
Cain Point	118	30
Cape Palace Wef	111	27'
Dep. Syr. Cliff	35	
" Yow-yardi	38' 30"	35
West N. P. C. Sabine	57	
C. Henschel	37	4

Sunrise Point

C. Alex	227	22
C. Palace	276	34
C. Kendrick	272	8
Sunday Mtn.	246	47
Duch Island	218	26
Thermoneter Hill	196	34
Eastern Cairn S. Nelson	105	36
W. End	90	20
C. Olsen	104	58

Kauai - (Bunker)

Pearson Island	327	30
C. Huchel	341	30
Wade Point	348	
C. Elizabeth	353	30
Sun at 10	289	

May 3, 1917.

Watch No. 7. 1 sec. fast on Bond

Brunton

Cape Sabine

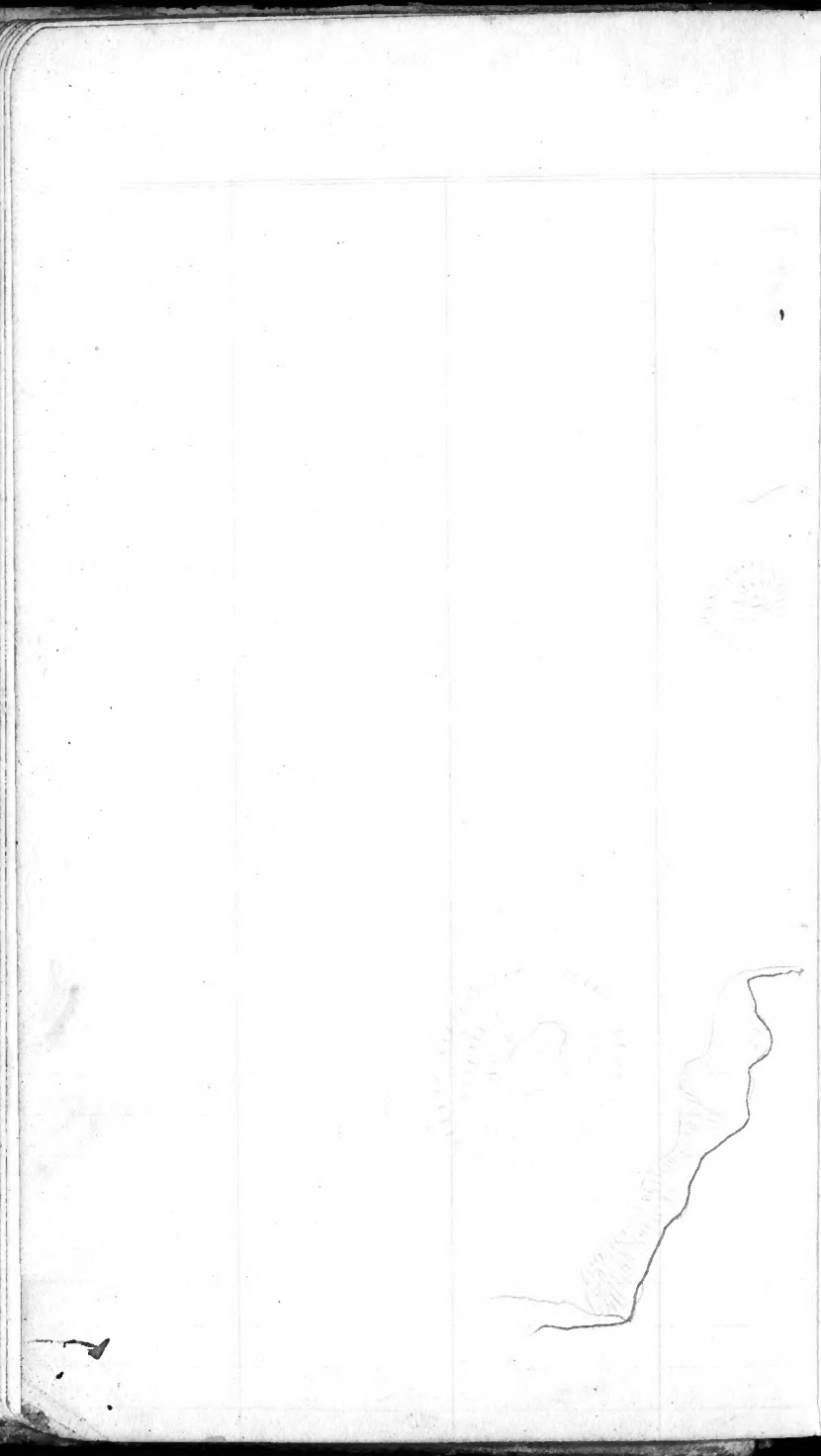
at 5-5-30 E. 2° 30' W

Farthest Point down coast	55-30
C. Osabella	48 30
C. Herchel	42
Small outer island	87
Lower Point Cape Sabine from centre of Pa.	30-30
Eastern End of ...	88 30
W. End ...	101 30
E. "	137 30
Up. Point Sabine	235 30

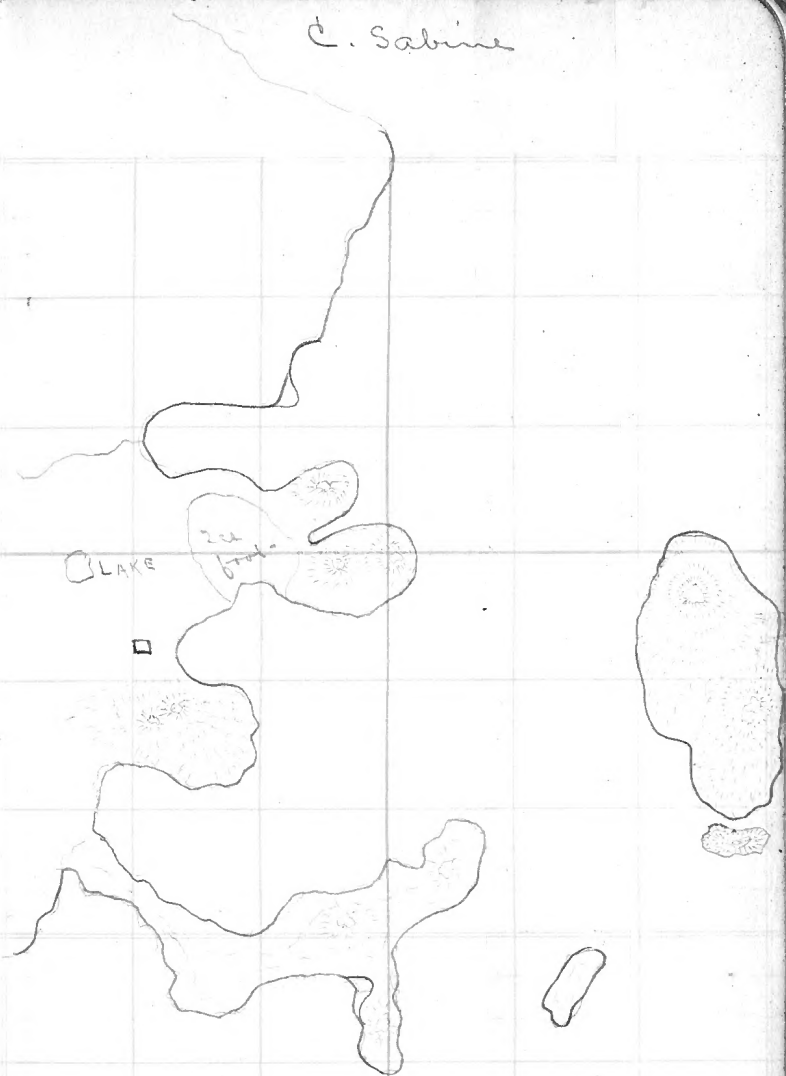
4 to mile



Cape Sabine

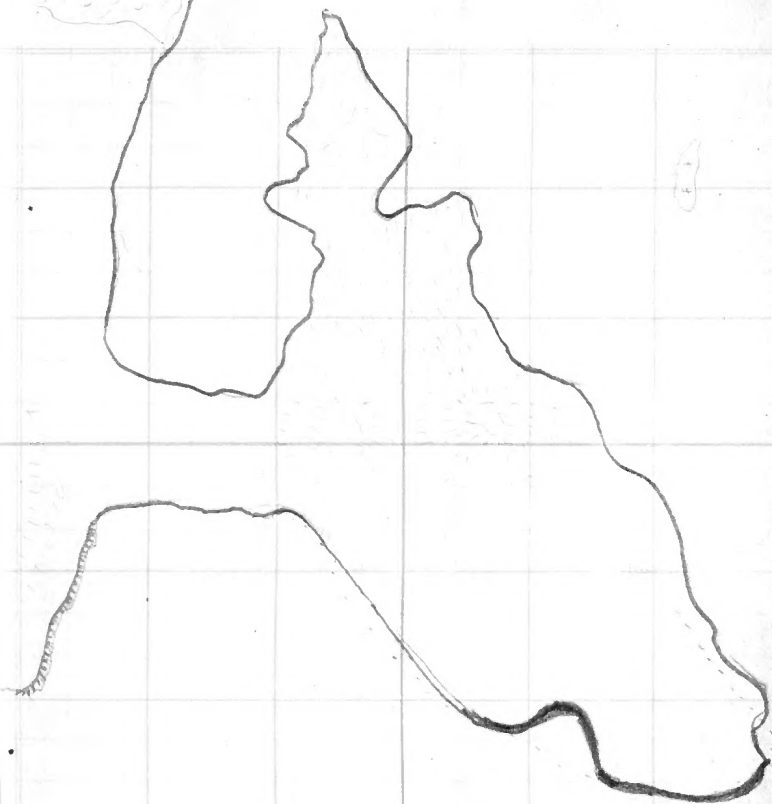


C. Sabine





C. Herschel



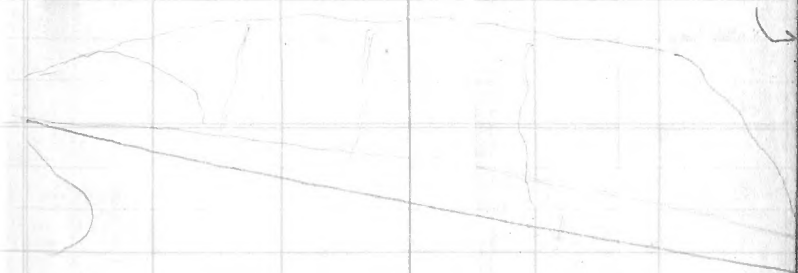
Island 200 yds from
 Eastern end of Alfred Newton
 Glacier. Laurentian Granite

High Head beyond glacier	37	30
End of glacier	67	
C. Isabella	74	30
Paquet Point	7	
Winsterville Head	77	30
C. Herschel	172	
Point west side Herschel Pass	202	
Eastern margin glacier	225	30
Course of glacier	225	30

Bearing of Sun $4^{\circ} 47^m$ $8^{\circ} 30'$

From depth of cone to western
front of piers 1300 snow shoe steps

$$\begin{array}{r} 2.5 \\ \hline 1300 \\ 7500 \\ \hline 25 \\ \hline 3250.0 \text{ feet} \end{array}$$



Brunton

Base Line 3500 steps from
 Glacier Island to mid-way point
 C. Herchel
 Bearings from eastern end
 of line.

Base Line	13 - 30
High Head beyond Glacier	289 30
Greely Camp	32
Trade Point	36
Long Glacier enters Bay inlet between last two from west side in line between last two named points	
To next glacier	52
C. Inabilla	65 30
Centic Pass	301
N. Point Pass	351
Nearest Point land to Island	+
C. Inabilla	67 30
Trend of Cape north	283

This point is at turn leading
 to end of cape

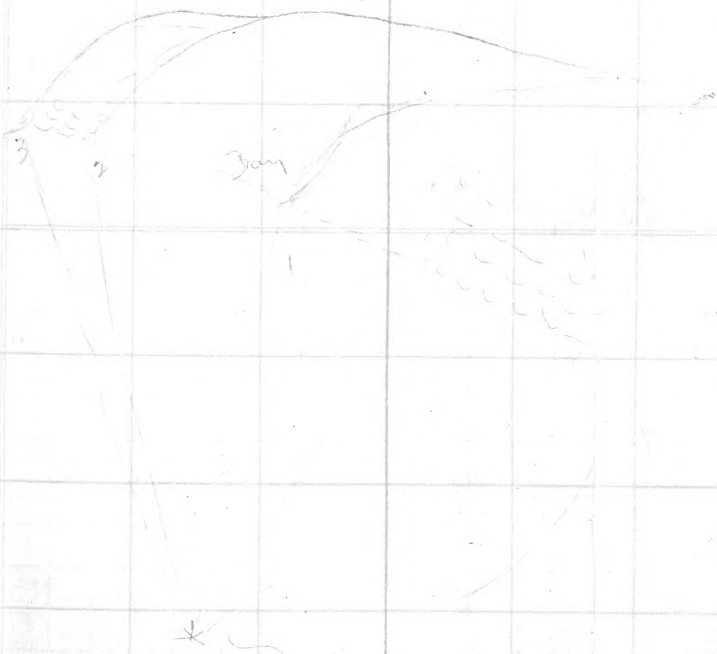
To next turn south	139
Bearing of Sun at 11-10	101

Thursday, May 10.

Merid. alt \odot $29^{\circ} 34'$
 Temp. $+1.5^{\circ}$ \ddagger

Brumby
 South Side Mt. Bolton Pass

W Point below	55
2 " "	64
3 " "	65
Head of lake and northern edge glacier distant one mile	4
Southern edge glacier	24



Thursday, May 10.

South side Cadogan Inlet.

Arrived here about 10-45 P.M.

A hard day. Have been plodding through soft snow for nine hours.

Alt. alt. \odot midnight $5^{\circ} 47'$
Temp. $-14^{\circ} 2 \frac{1}{2}'$

Friday, May 11.

Cadogan Inlet-

Meridian Alt \odot $29^{\circ} 58' 30''$
Temp. $-9.9 \frac{1}{2}'$

Bearing about $284^{\circ} 40'$

Point south side	A	214	55
" north "	B	154	25
" " " "	C	144	39
Head Inlet		28	10
Mountain N.W. corner Inlet		51	30

Cadogan Inlet

B

c

A



From where we came off glacier
 Island 6 miles distant 64°
 Point East 128°
 Our course down glacier 221°

Bearing of Sun

Time	B	
5-20-15	A	355 23 30
5-22-32	B	175 24
5-25-45	A	356 42 30
5-28-2	B	176 42-30
C	B 171 53 30	A 351 53
Junction two glaciers at land end cape light	A 317-26	B 137 26
Yeager's point across light	A 287-30	B 107-30
High Head beyond glacier in Cadogan Inlet	A 310-44-30	B 130-45
May 12, 1917.		
Merid Alt \odot		$30^{\circ} 30' 30''$
Temp. $+9^{\circ} \pm$		

Base Line 500 feet

Bearing W. End B 263 15 30

	A	83	16	30
Island	4	27	41	30
	B	207	41	30

Paget Point	A	351	40	
	B	171	40	

Point 2	A	338	15	
	B	158	15	

Bearing E. End

C. Faraday	B A	918	36	30
------------	-----	-----	----	----

	A	138	36	30
--	---	----------------	----	----

Island	A	27	18	
--------	---	----	----	--

	B	207	18	30
--	---	-----	----	----

Paget Point	4	351	40	
-------------	---	-----	----	--

	B	171	40	
--	---	-----	----	--

D. 2	A	337	28	30
------	---	-----	----	----

" "	B	157	28	30
-----	---	-----	----	----

Paquet Point



Camp on Ice about
May 13, 1917

Half way from Bear Camp

W. C. Faraday

Obs. liquid. alt.

31° 1'

Temp.

+7.8 F.

Sunday, May 13, 1917

Clarence Head 112-29-30 — 291-49-30

C. Faraday A 138 28 B 318 28


Face Basin 132 29 312 29 30

Pagot Point 332-17-30 — 152-17-30

Mt Point below Inlet 285-3-30 — 105-3-30

Covered distance in 10 hours

Paquet



Camp





May 14, 1917

Start at 11-20

Temp - 10° F.

Asymmetrical

5-5-5	1st limb	B	182-4-30
	2nd	A	2-4-30
5-5-5	1st limb	B	2-59-30
6-1-5	2nd	B	182-59-30
6-2-30	1st limb	B	2-52-30
6-4-44	2nd limb	B	183-52-30

W. End Base Line 2000 feet

A	154-32-30	33	72	30		
B	149-13	329	13	30		
C	144	37	324	37		
D	139	19	319	19		
E	133	34	313	34		
F	107	30	30	287	30	30
G	91	19	30	271	19	30
H	44-58	279-58	E	1° 2'		
I	138	28	30	318-28-30	E	1° 38' 30"

E. End Base Line

A	A	341-18	B	161	18			
B	A	330	34	B	150	34		
C	A	325	5'	B	145	50	50	
d	A	319	33	B	139	33		
E	A	314	31	B	134	31		
F	A	288	35	30	B	108	35	30
G	A	272	3	B	92	3		



Land Search
Bogon Point
and Bear Camp



A

4 A 250 47 30 B 100 47 30 E 1° 3'

2 A 319 36 30 B 139-36-30 E 1° 39' 30"

Bare line " " B 222° 54' (?)

" " from off shore on
eastern end

A 44-19-30 B 224 19

Pagat Point A 141° 26' B 321 26

May. 14, 1917

Merid. alt \odot 31° 31' 30"

Temp. +12.5°

Monday, May 14, 1917.

One mile north Paine Bluff.

Six hours to day from camp
on ice to where we shot bear. at
least 4 miles per hour.

Four hours and twenty minutes
from camp to end of big glacier.

Tuesday, May 15-

Bogor Point

6 $\frac{3}{4}$ hours from last camp

About 2.5 geographical miles
across

Heads of Kangasok & 1000 ft.

A 14-22 E 325-26

Center River station A 120-34-30 B 200-14-30

Sound A 102-22 B 282-22

Center Big Glacier A 59-55-37 E 277-55-30

N. Peak summit B 58-28-20 E 237-28-30

Elevation 2° 8' 30"

E Peak A 56-45-30 E

Elevation 2° 10' 30"

Center Point range A 37° 1' B 219° 1'

" " Glacier north

Beyond Paine Point A 211-38-30 B 137-28-30

Point south Big Glacier north A 311° 33'

E 131 33

To Entrance to first long glacier on (Paraday?)

north side new find A 300-20-30 B 120-20-30

John Ross Mt. A 184-18-30 134-18-30

Elevation 9°-24'-30"

There is a large ^{total} glacier filling all the
foot hills, extending from beyond most
eastern front to well beyond Mt. Sledentomb.
Next comes a talus slope about two miles
in length, a glacier ^{last} one mile wide with
vertical face one half mile from sea, then
a glacier two miles wide with two
fledgers divided in centre by a round
top mountain. Then Hayer Head

South of which and running west into
fjord between Hayter Head and Cape
Combermere there is another glacier.
South and west of Cape Combermere
there is a very large glacier, I presume,
the Rice Glacier. Myrtle Island cannot
be seen. ~~Sunder's Island~~ What was
called Sunder's Island is a very
dark, bold, knobby of rocks now
imbedded in a glacier stretching
from the Rice Glacier west and
connecting with a large glacier
which fills all of Smith Bay and
the whole circle of the coast
around to Tallot Inlet. Stretching
down the valleys from the mountains
there are twelve feeders connecting
with this coast glacier.

Tuesday, May 15.

Obs. Myrid. Oct \odot 32° 4'

Temp. + 21° 7'

Bearing B L - 87-40-20 A 107-40-20

Azimuth

P. W.

Line 7-1-55 A 21-50

" 7-4-12 B 32-50

Camp off Peter Point?

on Seeborg

May 16

6-51-40 \odot 20 14 30

6-52-50 20 19

6-53-45 20 21 30

6-55-20 20 26 20

6-56-15 20 30

Azimuth

7-7-43 } A 21 6 30

7-9-55 } B 201 6 30

Dumont

Base line on way to C. Faraday

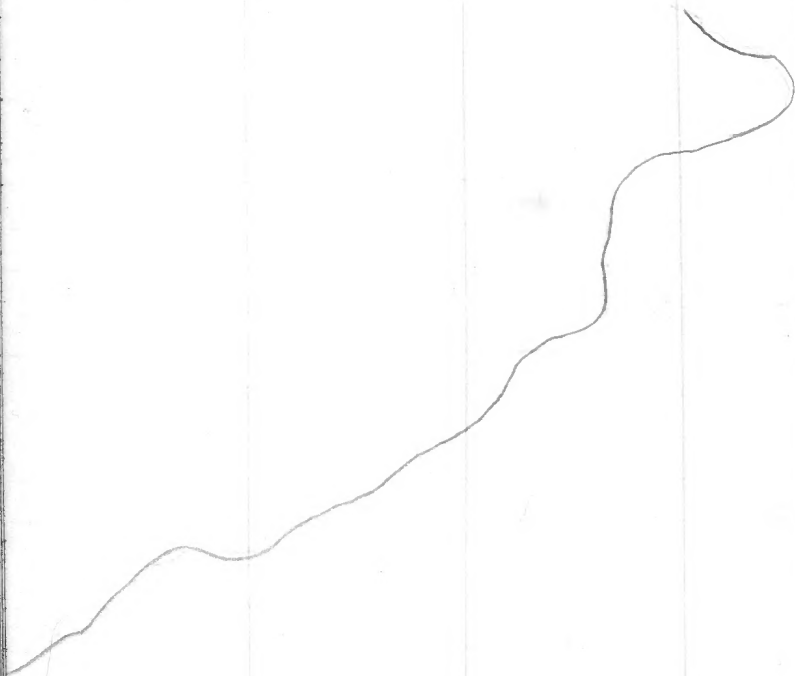
1700 steps 18 min

from S.W. End Clarence Head 136

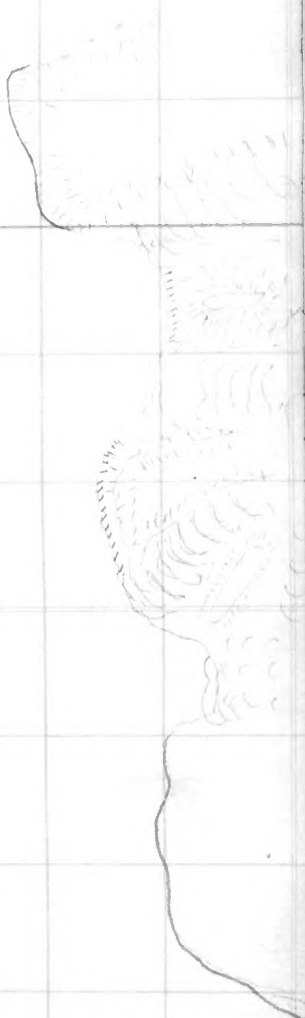
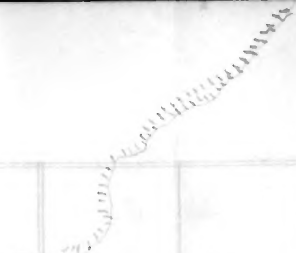
" N.E. " " " 130 30

Should judge Rabbit

Tuleet to be at least
25 miles in depth. There is
a magnificent looking island,
resembling very much a old
castle, just beyond the
narrowest part of the fjord
or what is really its entrance
The outer part between C.
Lauabay and Boger Point
should be a bay.



Sabbat Zuleh



From American Museum Glacier

The boat trends south west
true and with a gentle curve
enters up into Galbat Inlet
running about west. At the
constricted part of the inlet
it turns north of west. The
end of the inlet could not
be seen either yesterday or
to day. I should judge it at
least 25 miles in length. It
is by far the most picturesque
fjord I have seen on this
coast, or, in fact, in the world.

About half way from Pine
Bluff Glacier and the point
about one mile from land there
is an island, low, fifty feet
above water, I should say.

Extending north and north east
there are two lines of ledges
which are evidently exposed
at low tide

Camp of Museum Glacier on
the western boundary

End of glacier outlet	153	30
End Paine Cliff	13	30
" C. Sarabau	26	
Outlet and American Co. survey corner	41	
Boyer Point	45	
Bottom Smith Pass	55	30
Rice Glacier	67	30
Mt. Skutumpah	72	
Clarence head	81	
Back to outlet point Museum Glacier	100	30

We are distant from face of
glacier 700 yds
from Paine Cliff 3 miles

May 17

Iceberg Camp 15 hours
off Lewis Glacier

Paget Point	332-13-30	152-13-30
Bear Camp Point	320-19	140-19
Entrance to Outlet	270-3-30	90-3-30
1st Glacier	251-5	77-5
2nd "	246-44	66-44
Beginning Museum Glacier	234-17	54-17

alt below sea level
Camp. $+10.5^{\circ} \pm 7^{\circ}$

Points which should receive

names:

Large Bay from C. Faraday to
Roger Point.

Two High Mountains on Roger Point
Island in Sabbath Inlet

Island off C. Faraday

Glacier between Mendenhall and
C. Faraday.

Mendenhall Glacier

Two Glaciers

Glacier between Caribou Inlet

Glacier back of Roger Point

" head of Adirondack Inlet

" on end of Roger Point

Lake C. Elizabeth

Island near Alfred Newton Glacier

Island north of Herschel

Pinnacle of rock south side

Bedford Pine Islands

4 Glaciers in Baird Inlet

Pinnacle in Baird Inlet

Pine Island (11)

Large Glacier back of it

Bedford Pine Islands

From Bear Camp Point

"like an island"

Two mountains bearing west
and N.W. west from Leeberg Camp
on the mainland, the former 15
miles, the latter 10 miles.



Lower End of the Island Head

"Like an Island"
 Friday, May 18.
 Linné Sights

Linné	①	
6-11-55		19-12-30
6-13-5		19-9
6-14-12		19 5 30
6-14-55		19 3
6-15-32		19 1
6-16-14		18 59 30
6-17-5		18 56 30

Agassiz

6-20-40	1st Sighting	A	198	6	30
6-22-58	2nd "	B	18	7	
6-23-27	1st Sighting	A	197	47	
6-25-44	2nd "	B	18	47	30

Bare line on Lee foot
 of "Bear Camp" "Like an Island"
 from northern end 876 feet

Southern Crest A 187-15 B 7-15
 Northern Elevation 11° 30'
 Northern Crest A 194-230 B 14-9
 Elevation 11° 50'

1 Bluff Bare Pagel Point	A 212-42	B 132-42
2 "	A 219-41-30	B 139-41-30
3 "	A 233-35	B 153-35
Pagel Point	A 246-22	B 166-22
Elevation 2nd Cap	1° 49'	
New Island	A 24-25-30	B 204-25-30

Friday, May 18.

Bare Line	876 feet	A 112-46-30	B 292-46
Southern Crest		A 205-20-30	B 25-20-30
Elevation		11° 57'	
1st Bluff		A 317-33	B 131-32
2nd "		A 324-15-30	B 144-15-30
3rd "		A 337-46-30	B 156-46-30
Paget Point		A 350-38	B 170-38-30
Elevation Ice Cap		1° 48'	
Head Island		A 27-14-30	B 207-14-30
Goat Mountain		A 139-37	B 319-37
Arise "		A 140-36	B 320-36
Yellow Mt.		A 142-46	B 322-46

Obs. alt. \odot below pole $7^{\circ} 25'$
Temp. $+10.5$

High mountain on Paget Point in line with outer end Island Pa and Cove at base of glacier at base of Paget Point

Two points -- Paget and High Lead in line



Cadogan Inlet

Race line running A 296-52-30 B 116-52-

Length 500 feet

Southern end to Right Mt 208-40^A B 2840
beyond head of Inlet

Mt. right 211-56-30 B 3126-20 E 1-3430

To Cove Mt. right A 222-49 B 22-47 E 2-48

Outer end Sale Point 336-34 B 156-34

across from A 285-40 B 103-40 E 2-28

Northern end

Right Mt. 208-46-30 B 2846-30 E 1-27-30

Mt. right 213-16 B 33-16 E 1-35

Cove Mt. A 232-37 B 52-37 E 2-48

Sale Point A 336-50 B 156-50

Outer end Southern Point (Page)

A 37-45 B 217-45

Head Inlet A 209-57-30 B 29-57-30

" " A 211-11 E 31-11

Southern end

Showing rocks on head bank 25-6.8

" " " " 25-16

(E nearest)

Sledge over snow bank - three

men 25-11

Glacier

30

Elevation 1° 36 30

10

5

5

5

5 miles to Purol Cadimpu
2 1/2 miles



Sunday, May 20

Leave camp Cabigan Inlet 2-25 P.M.

Across Inlet 4 miles 3-30
Cul. C. Elizabeth and Sale
Point strikes big glacier zone
which we came some quarter
mile west of Rocky Point
four miles from southern
entrance to Inlet.

Cul. of Paget Point covered
with glacier. Photo from
about middle of fjord.

To last point of Sale Point 4-30
Leave Sale Point 5-48

May 20

Camp N. side C. Elizabeth
Entrance to Pass

Lower meridian alt. \odot $8^{\circ} 17' 00''$
Temp. $+11^{\circ} 7'$

Mt. Boston
Height

Base line 650 feet
Outer end $8^{\circ} 47' 30''$
Inner " $9^{\circ} 10' 30''$

Blairing:

Spillo-da-henny land	4	48° 2'	B	228° 2'
Childs Station	4	42-27-30		222-27-30
C. Alexander	4	37-4-30	B	217-4-30
Quinn's Place	4	29-50	B	209-50
Brother John's	A	19-46-30	B	199-46-30
C. Sabat	4	311-8	B	131-8
C. Herschel	A	307-13	B	127-30

Soundings

Three miles due north

C. Sabine	390 turns
Coched Hat Island (Buntow)	340°
C. Sabine	95-30
C. Campdown	277-30
- - - - -	- - - - -

Smith Sound Camp

6-1-45

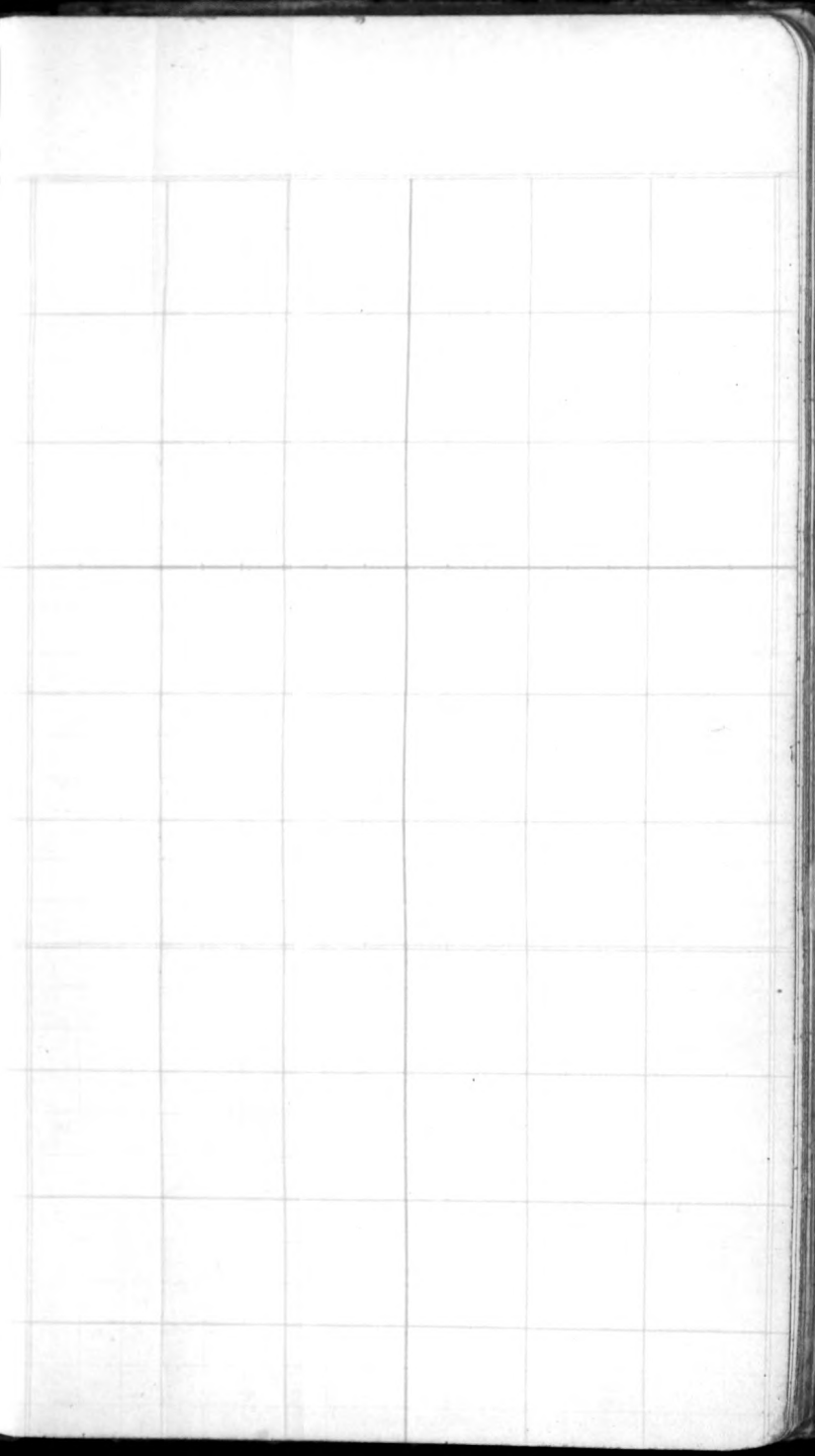
184

C. Matheson, V.E. and Littleton
and 100 yds inside C. Ohlsen are
in line

Friday, May 25

A.M.

Watch No. 7	3-24-27.5	Bond	3-34
"	"	slow	9 ^m 32.5
"	lost	22 sec.	per day



Station Mc-ask-ta-houne

Bare Line 1000 feet - A 211-55 B 31-55
 From 4

- A A 103-20 B 283-20
 B A 119-26-30 B 299-26-30 Elevation 6°
 C A 158-2-30 B 338-2-30 E. 3° 16'
 d 4161 59-30 B 341-59-30 E 2° 4' 30"
 E 4164-10 B 344-10

From 5

- A 100-46 B 280-46
 B A 121-7 B 301-7 E 6° 54'
 C A 156-49 B 336-49 E 3-29-30
 d A 160-56 B 340-56 E 2-7'
 E A 163-15-30 B 343-16-30

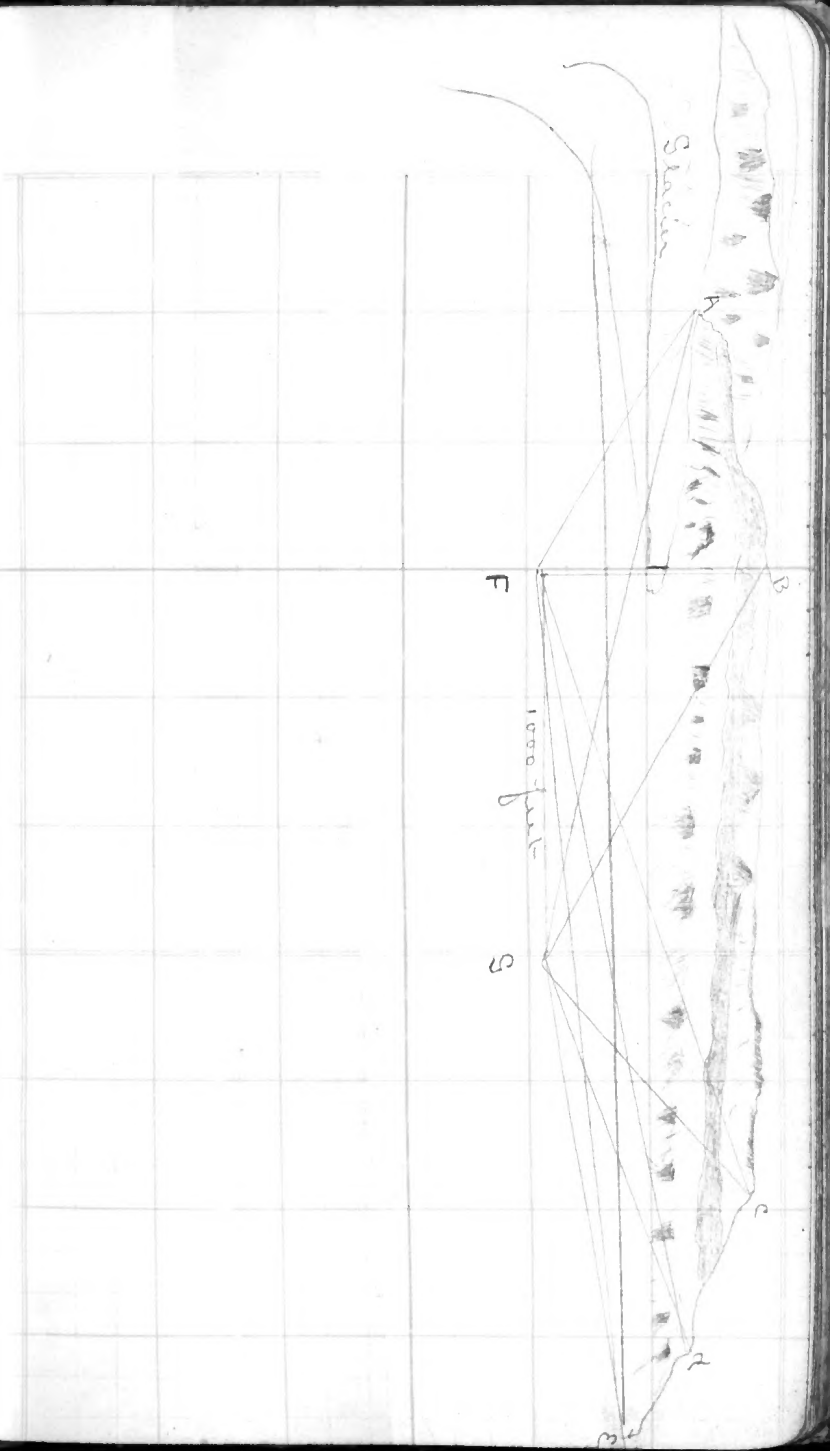
Bare Line 1000 feet

- To top Crystal Palace 25° 50'
 " " " " 19° 5' 30"

Crystal Palace Cliff

- C. Alexander A 138-35-30 B 318-35-30
 C. Kendrick A 283-28 B 102-28
 Littleton W. End A 270-1-30 B 90-1-30
 Sunrise A 272-0-30 B 92-0-30

Aneroid Barometer Sea ice 30.34
 Cape Alexander Glacier 29.53



Knorr Island

C. Alexander A 12.2-59 B 258-59

Crystal Palace cannot be seen

C. Kentucky A 118-52 B 298-52

See Niagara A 68-50-30 B 248-50-30

Cabin above Hayes Vindex Quarters A 8-27-30

House A 225-45-30 B 145-45-30

Cabin Thermometer Hill A 297-27-30

Sunset Point A 240-18 B 60-18

Star Island A 215-50 B 35-50

Harbor Rock

Star Island A 166-20 B 346-20

Knorr A 158-24-30 B 338-24-30

Hayes Cabin A 133-30-30 B 313-30-30

Dog D. A 353-30-30 B 173-30-30

House A 305-36 B 125-36

Provision Point A 280-38-30 B 100-38-30

Thermometer Hill 258-27 B 73-27

Sunset Point A 213-30-30 B 33-30-30

E 1° 36

E 2° 27

E 2° 12

E 3° 31

B 188-27-30

B 117-27-30 E 4° 58'

Radeliff 150-7-30

B 321-7-30

~~E 8° 4'~~

E 8° 4

Bare Line at Etah 2640 feet

N.E. End 238 feet from river mouth

from Station D

Magnetic North runs $6^{\circ} 30'$ south of
Gale Point, northern entrance of
Cadoogan Inlet in Ellesmere Land.

	A	B	
P	150-18-30	B 330-18-30	
K	A 148-18	B 328-18	
J	146-9-30	326-9-30	
H	144-3-30	324-3-30	
G	140-30	320-30	
F	138-31-30	318-31-30	
E	137-10-30	317-10-30	
D	131-28	311-28	
C	125-49	304-48-30	
B	124-48-30		
A	117-14	297-14	
M	38-17	218-17	
W. End Butte	56-10-30	236-10-30	
E. " "	52-14	232-14	E. $5^{\circ} 19'$
Re-mah-to Point	-25-49	205-49	
O Provision Point	-303-20	123-20	
House P	331-21	151-21	
1st point below Provision P.	A 189-23-30	B 9-23-30	
N	124-44-30	304-44-30	



Rough diagram to illustrate salient points in Foulke Fjord.



Station B.

North East End of Base Line

	A	B	
O	175-15	355-15	
L	154-55-30	334-55-30	
K	153-14	333-14	
Q	151-30-30	331-30-30	
I	150-4	330-4	
H	147-17	327-17	
S	145-43-30	325-43-30	
F	145-48	325-48	
E	140-59	320-59	
D	"through" "Bubble Island"		
C	131-9	311-9	
M	85-13	265-13	
West End Butte	68-28-30	248-28-30	
East " "	64-14-30	244-14-30	E. 5° 14'
Ree-walk to P.	38° 0' 30"	218°	
P	265-33-30	85-33-30	
Int Point below P.	171-30	351-30	
Base Line	167°	347°	

Mouth of Plover Head Gulche Ford

	A	B
Re-nah-to Point	207 54 30	27 57 30
N.E. End Wog I. Cairn	205 23 30	25 23 30
Pa	201 14	21 14
Sunrise Point Cairn	206 29 30	26 29 30
Gull cliff Point	194 3	14 3
S. Edge Glacier	27 23 30	207 23 30
N. " "	18 38	199 38

Gull cliff Point

	A	B
	0 0 "	0 1 "
Re-nah-to Point	222 13 30	42 13 30
Camp "	215 4 30	35 4 30
Sunrise "	214 35 30	34 35 30
Wog Island	214 29 30	34 29 30
Pa	209 31	29 31
Refuge Cove	173 46	353 46
S. Side Glacier Val.	31 35	210 35
N. " " "	22 38 30	202 38 30

Radcliffe Island

	A			B			E
Star. I.	0	4	"	0	1	"	
Star. I.	19	48	30	199	48	30	
Knorr	7	43		187	43		
C. Alex.	310	43	30	130	43	30	1° 30' 30"
C. Hendrich	305	37	30	125	37	30	2 1 15
Crystal Palace	295	24		115	24		2 13 30
Water Fall	277	18	30	97	18	30	
Sonnlag Kyon	254	24	30	74	24	30	3 31
Hager's Cairn (D)	189	12	30	9	12	30	3 5
Har. Pa.	166	29	30	346	29	30	
Boog I.	158			338			
House	139	20		319	20		
Pos. Point	133	40	30	313	40	30	
Sher. Hill	108	8		288	8		4° 59'
Sunrise Point	55	7		235	7		

highest point

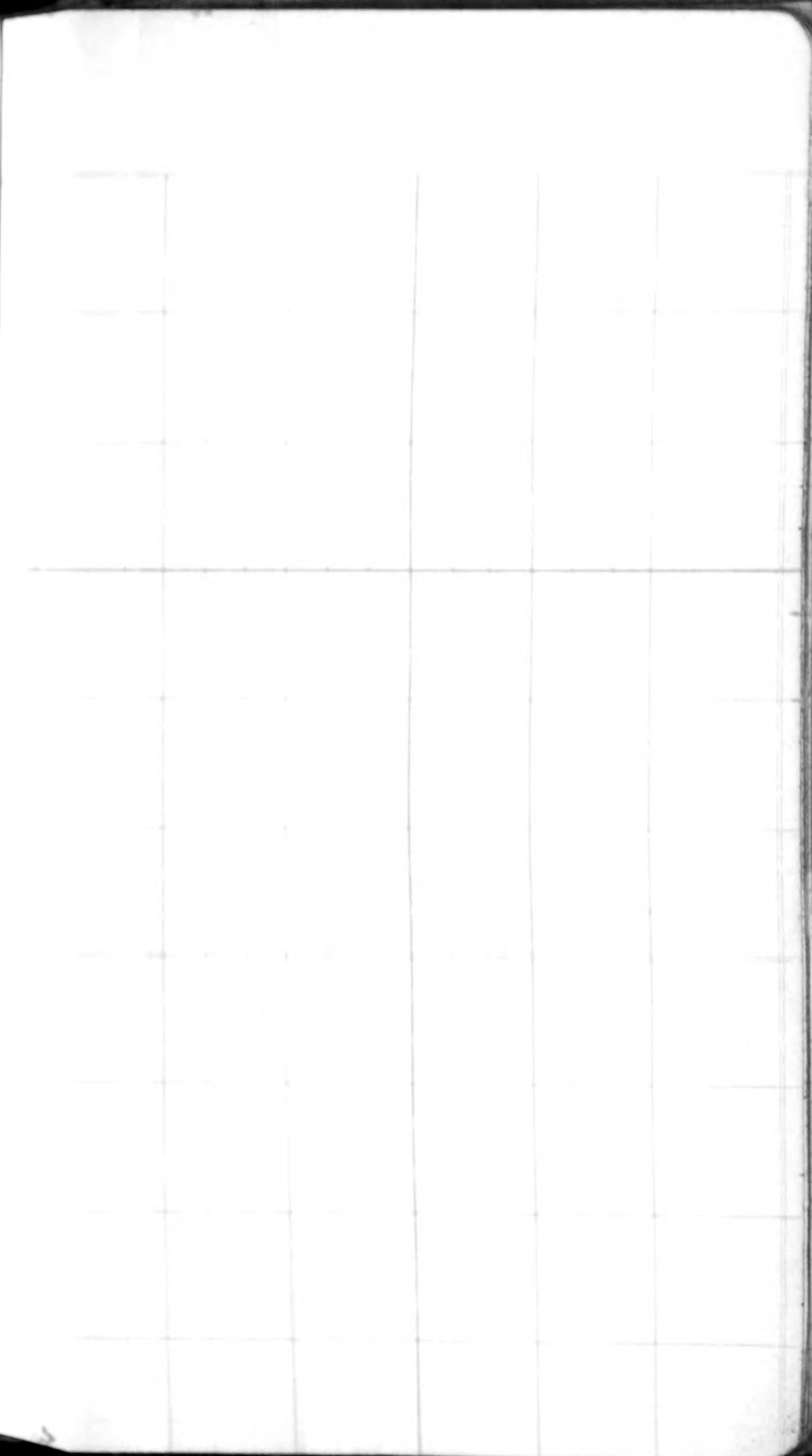
Pe-nah-to Point

	A			B			E
	0	1	"	0	1	"	"
Point No 1	227	30	30	47	30	30	
River Point	223	28		43	29		
Division P.	213	40	30	33	40	30	
Wog S.	204	56		24	56		
Pa	194	40		14	40		
Summit Pa	190	10		10	10		147 30
Her. Hill	220	45	30	40	45	30	3047 30
W. Point Route	114	4	30	294	30		9 51
E. " "	107	9	30	287	9	30	10 40
S. Side Glacier	30	29	30	210	29	30	
N. " "	206	3	26-3	206	3		
Shore	21	44	30	201	44	30	

Base Line 500

E. Cliff
11° 52' 30"
12 54

75 feet from shore



Station F

South Cairn	71°	
V _o 1	48°	
V _o 2	25°	
V _o 3	0	
V _o 4	23°	
V _o 5	50	20
V _o 6	62	41
V _o 7	69	40
" 8	75	10
" 9	77	20
" 10	78	50

Station F

Bare line 350 feet

V _o 10	24° 40'	
V _o 11	0	
V _o 12	20° 53'	
V _o 13	40°	
North Cairn	62° 50'	

LS	83°
LX	84° 50'
LI	81° 30'
LK	83° 45'

Station L

Lo 7	130 20	310 20
------	--------	--------

Station M

Lo 7	287 13 30	107 13 20
------	-----------	-----------

Station No. 2

	A		B	
Cain Co. Side	106	55	286	55
No 1	105	4	285	4
No 3	286	16	106	16
" 4	287	19	107	19
" 5	288-54-30		108-54-30	
" 6	289	45 30	109	45 30
" 7	290	20	110	20
" 8	290	49	110	49
" 9	291	1	111	1
" 10	291	16	111	16
" 11	291	24 30	111	24 30
" 12	291	37	111	37

Station at No. 12

No 13	294	16	114	16
South Cain	289	52 30	109	52 30

Station at North Cain

South Cain	110	43	290	43
------------	-----	----	-----	----

Point No. 1. Foulke Tunnel

	A			B			E		
	0	1	20	0	1	20	0	1	20
River Point	20	13	30	40	12	30			
Sher. Hill	18	11	30	38	81	20	5	8	
Por. Point	205	54	30	205	54	30			
Duck I	199	28		19	28				
Dog I.	182	54	30	2	54	30			
Ta. Heights	157	40		207	40		2	48	30
W. End Butte	90	31	30	220	31	30	7	27	
E	84	34		264	34		7	40	
Per-mah-to P	46	55		226	55				

Dog Island

	A			B			E		
	0	1	20	0	1	20	0	1	20
House	267	16		87	16				
Sher. Hill	232	22	30	52	22	30	6	45	
Por. Point	228	47		46	47				
Camp Point	210	57		30	57				
Sunrise P.	209	17	30	29	17	30			
Duck I.	203	30		23	30				
Star I.	168	38	30	349	38	20			
Knave I	163	8		343	8				
Radeliffe	158	19	30	338	19	30			
Harps Cove	149	40		329	40				
So Side Glacier	26	54		206	54				
No	23	16		203	16				
Per-mah-to P	22	41	30	202	41	30			

Equal Altitudes

July 18, 1917

Watch 15 min 23 sec slow Bond

W	11-37-22	⊙	31-33-30
	11-39-55		31-37
	11-41-55		31-39
	11-42-35		31-40
	11-43-50		31-42

July 19

9^h 2^m 37^s B 233° 8'
 9 4 55 A 53 8

Equal Altitudes

Time	⊙	
9 ^h 9 ^m	28° 45'	3 4 13
9 10 14	28 47	3 3 27
9 11 9	28 49	3 2 35
9 11 55	28 51	3 1 45
9 12 47	28 53	3 8 50
9 13 38	28 55	3
9 14 32	28 57	2-58-55
9 16 2	29°	2-31-30 2-57-50

Bond 9^h 36^m
 " 3 22

Watch 9^h 20 49
 " 3-6-49

1-36-10

1-32-55

1-31-27

1-30-45

1-29-52

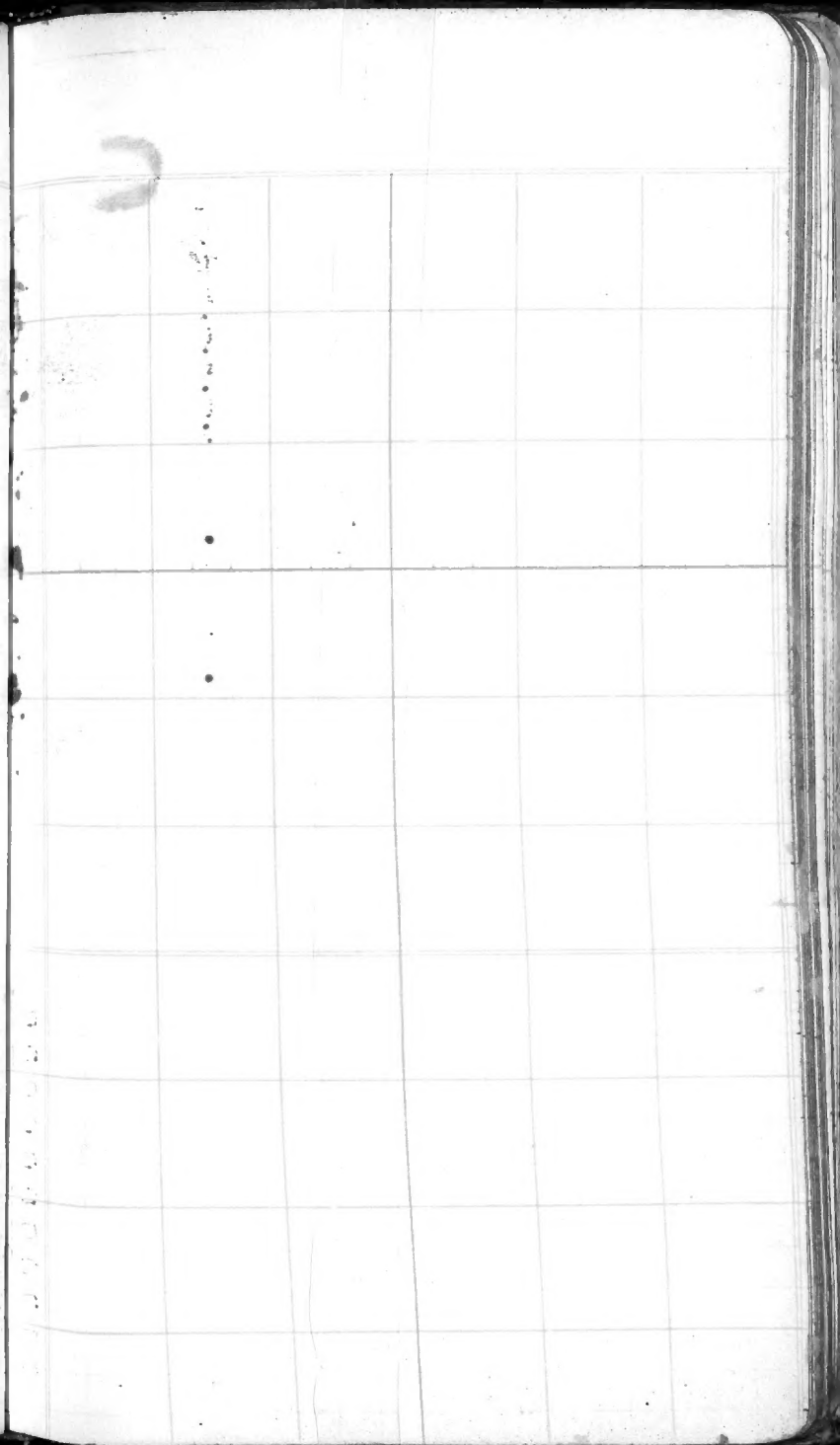
July 19

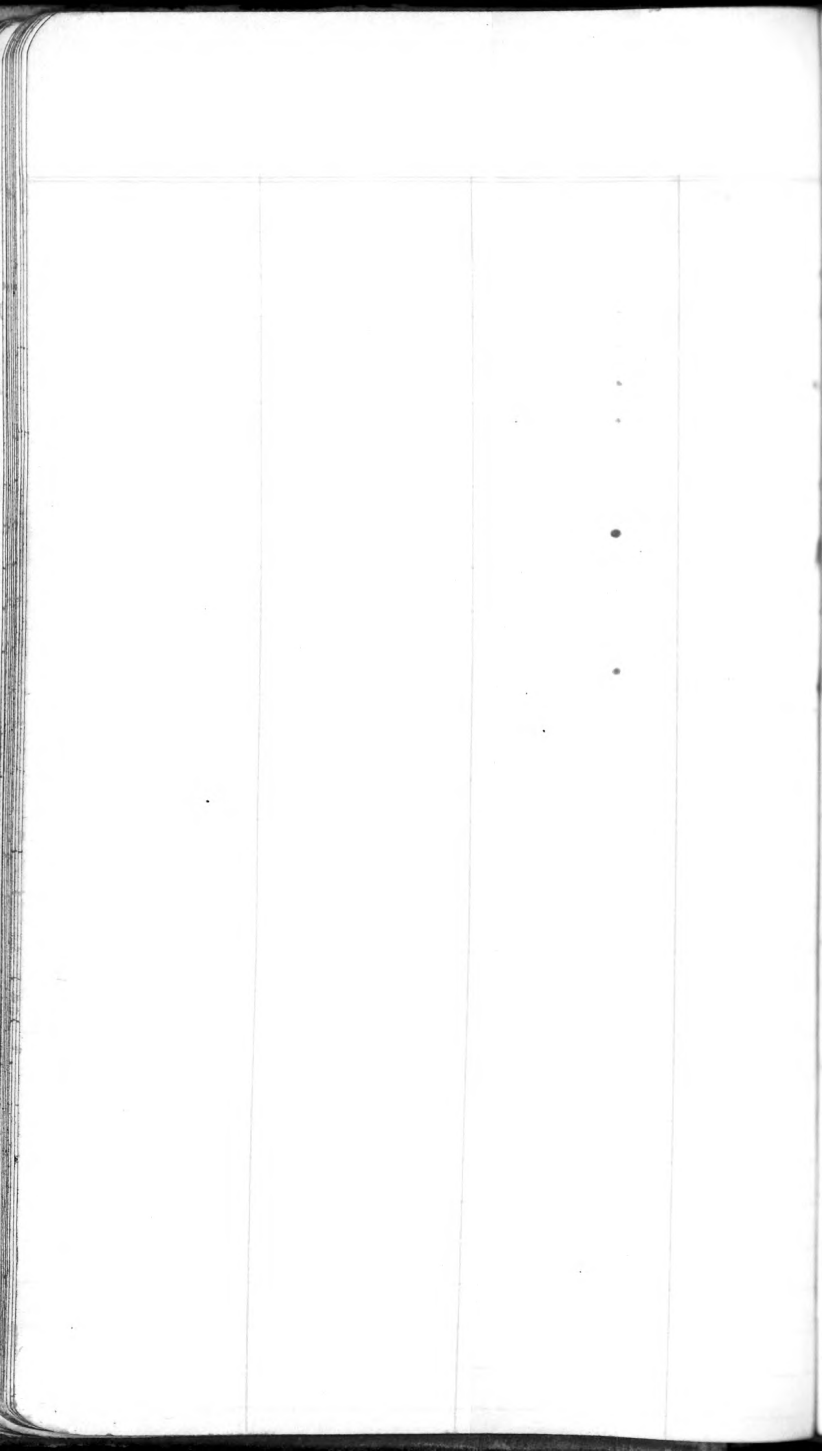
Equidistant Act Q 32° 21' 15"

Ther. 52

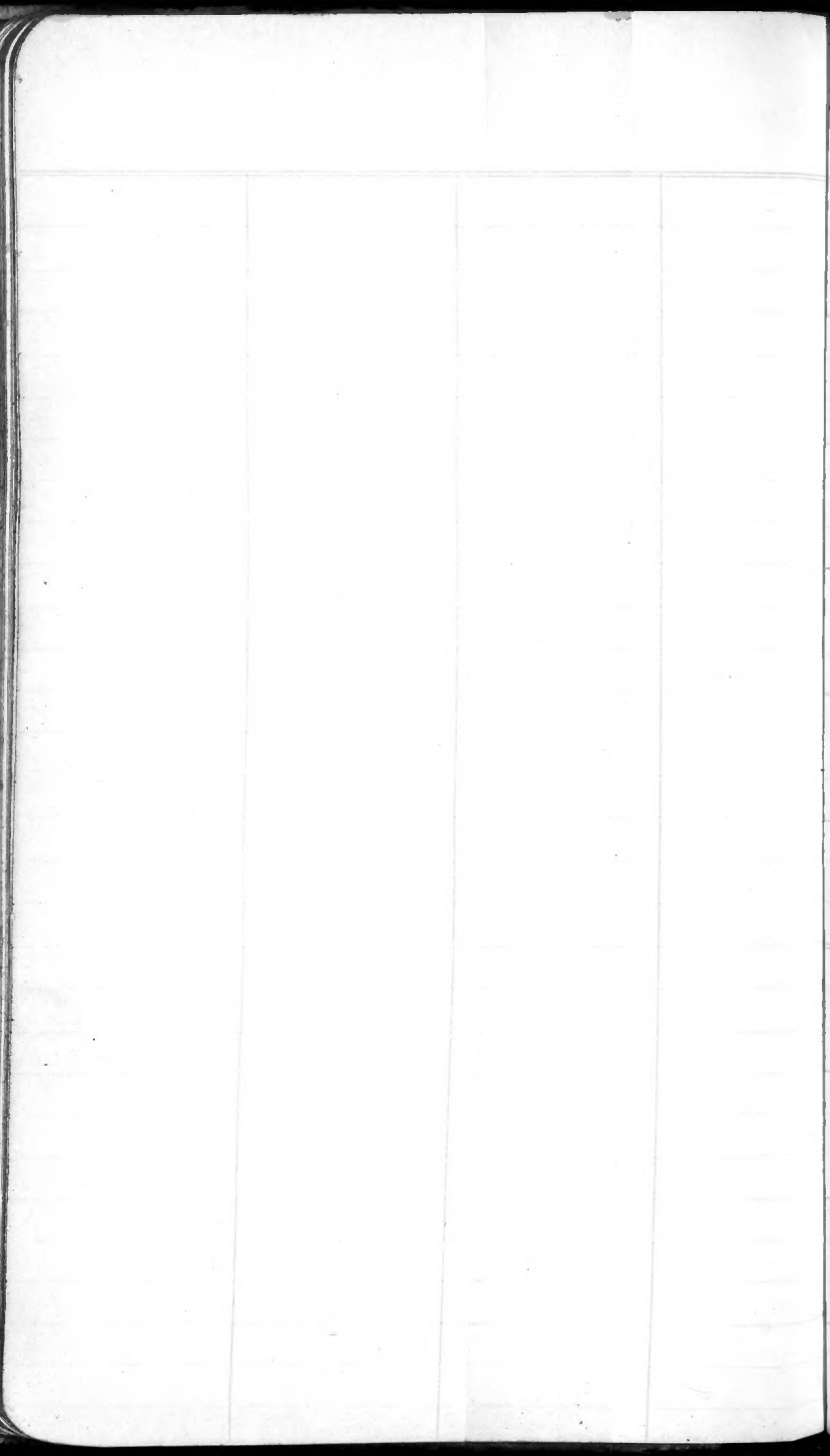
Bar 29.25

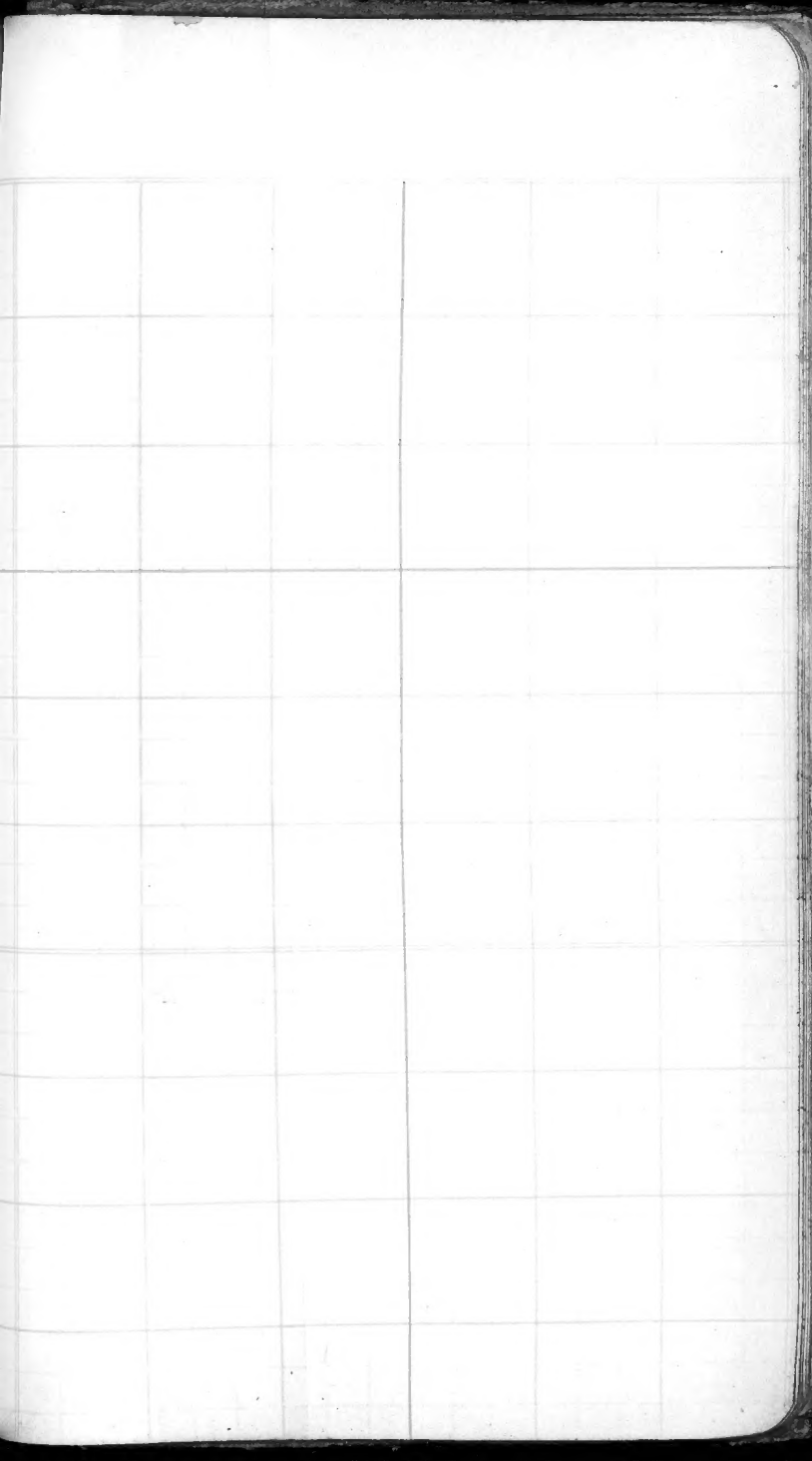
Angle of elevation of Hill south
from base $5^{\circ} 57'$
lowest part of Hill $4^{\circ} 34' 30''$











Plates

- | | | |
|--|--------|-----------|
| C. Elizabeth from Gale Point | 10-22 | |
| 20 Paget Point | " " " | 10-32 |
| 21 C. Elizabeth Pass | | 25-11 |
| 22 " " (very dogs) | | 80-11 |
| 23 Coast from C. Eliz. Pass | | 25-22 |
| 24 " " " " " | | 25-22 |
| 25 Mt isolation false line (3?) Smallest | | |
| 26 Greenland 10-30 P.M. | | 10-16 |
| 27 " " " " | | " " |
| 28 Mt. Moulton " " | | 25-11 |
| 29 Southern coast | | 25-16 |
| 30 Lupie Ring C. Eliz. | | 25-8 dark |
| 31 " " " " | | 25-16 P. |
| 32 Eskimo Graves at C. Sabine | 25-8 | Dark |
| 33 " " " " " " | | " " |
| 34 Ice float at Sabine. E. and ab
near sledge | 25-8 | Dark |
| 35 Same ab gone on | 10-16 | Dark |
| 36 Series of ice float exposures all on | | |
| 37 25-8 excepting one with three | | |
| 38 boys working on ab-sledge. sledge | | |
| 39 taken toward K couch | 10-16 | |
| 40 E - tramping over snow bank | 10-16 | |
| 41 Cutting road snow bank | 25-11 | |
| 42 Wheaton flag 4 p.m. | 10-16 | |
| 43 O.A.S. " " | 10-22 | |
| 44 Bowdon " " | 10-16 | |
| 45 Dogs | 235-8 | AA1 |
| 46 " " | 160-11 | AA2 |

47 Dogs 222 110-11

48 " 221 295-11

49 Littleton from Life Boat Cove HH1 25-16

50 " " " " " " HH2 "

51 Life Boat Cove and Land north KK1 25-16

52 " " " " " " KK2 "

53 Passage Littleton and Land SS1 25-22

54 E's ledge on ice SS2 110-11

55 Ah-pood " " " " " " HH2 135-11

56 Winkler Cliff KH1 25-16

Names to be remembered.

American Museum
Henry L. Coburn
Zeus Crane
Sparks
Greenwood
Choudhury
Spear
Lodding
Loub
Cline
W. S. Lord
Col. Bampf
Goodell
Hyde
Worcester Academy
Lowe
Abercrombie
Aldrich
Mayo
Brainard
Nether
Russell
Wilson
French
Jeffrey
W. S. Bryant
Provincetown

Aw-hark-fut vo-me-ah-mah

tai-a-ah-da-hah?

Will the ship come in the summer?

Glaciers

On South Side Rabbit Tule	8
Roger Point to Carina Head	15
North Side Rabbit Tule	4
One hanging glacier near about 1 a mile from south of Paine Bluff, only about a quarter mile of the latter shows.	
Paine Bluff Glacier	1
Large Glacier	1

K2 Braus Egg: $\frac{1}{2}$ - 128

E2 " " $\frac{1}{5}$ - 32

E " " $\frac{1}{5}$ - 256

A2 " " $\frac{1}{5}$ - 256

Films
 Roll I

- X 1 Blank
- X 2 Ice on ice foot Kanowitz $\frac{1}{5}$ -16
- X 3 Brewster Island $\frac{1}{2}$ -45
- X 4 Peary Hut a-driving up 100-8
- X 5 " " $\frac{1}{5}$ -16
- N 6 ?

Wiped one

Roll II

- 1 Mouth in Balise Pass 25-22
 - 2 South " " " "
 - 3 " along shore $\frac{1}{5}$ -Smallest
 - 4 Midnight Sun 9 Exposures
 $\frac{1}{100}$ on smallest stop
 15 minute intervals. From 11-45
 to 1-45 pm. Each near-time
 - 5 Head Cadogan Inlet $\frac{1}{2}$ -Small
 - 6 Ent " " " "
- Trouble with shutter on 5 & 6

Roll III

- N 1 Head Cadogan Inlet $\frac{1}{5}$ -45
- 2 " " " " "

Panorama

- { 3 Panorama of land to our
 - { 4 left as we came down
 - { 5 over glacier from Cadogan Inlet
 $\frac{1}{5}$ -45
- "Island" $\frac{1}{10}$ -22 (1 P.M.)

Roll 4

- | | | | |
|---|------------------------------------|-------|----|
| 1 | Bear on sledge | 1-45 | B |
| 2 | Bear tracks | 25-16 | |
| 3 | Bear tracks | 25-16 | |
| 4 | Brunstede's head | 25 | 22 |
| 5 | Bear tracks | 10 | 22 |
| 6 | Camp on ice north of
C. Faraday | 1/5 | 45 |

Roll 5-

- | | | | |
|---|--------------------------|---------|------|
| 1 | Panorama | | |
| 2 | Inlet below Bear camp to | | |
| 3 | Clarence Head | Brig. 2 | 1/10 |
| 4 | 1/10 | 45 | |
| 5 | | | |
| 6 | | | |

Roll 6

- | | | | |
|---|-------------------------------------|---|---------|
| 1 | Bears on water | 5 | 25-22 |
| 2 | Ag. two-nac. tracks | B | 25-16 |
| 3 | 1-yr old Bear tracks and footprints | E | 1/10-45 |
| 4 | C. Faraday from pale glacier | B | 1/10-45 |
| 5 | Clarence Head " " " " | " | 1/10-45 |
| 6 | Camp " " " " | B | 1/5-32 |

Roll 7

- | | | |
|---|---------------------------------------|----------------------------|
| 1 | Two foot on Am. Museum slide | 1/10-45 |
| 2 | C. Faraday H.B. 59 m. | 25-16 |
| 3 | | |
| 4 | Panorama from Clarence Head around to | |
| 5 | | C. Faraday from C. Faraday |
| 6 | | |

Exposures

Roll 2 #2 $\frac{1}{5}$ -32 V. early
 " " #3 $\frac{1}{5}$ -32 " "
 " " #4 $\frac{1}{5}$ -3 " " Land
 " " 5 200-W

Plates

- 1 Ice forced up on ice foot; logs and sledge in foreground 10-22
- 2 Same showing land and ginnale. 10-32
 View of berg in shadow
- 3 Peary hut 10-22
- 4 " " E. during up 100-8
- 5 Panama 13 plates of
- 6 Bedford Pine Island from Beeroot
- 7 Island to Ross Glacier $\frac{1}{10}$ -22
- 8 Panama ^{from} Wade Point to farthest
- 9 point south. two plates 10-22
- 10 Herschel Pass from $\frac{1}{2}$ miles south 10-32
- 11 Greeley's first landing place (B) 10-32
- 12 E. coming down C. Eliz. glacier 195-
- 13 Akood " " " 195-8
- 14 Midnight Sun Octogan Inlet (15 min)
 10 Exposures $\frac{1}{235}$ on 22
 Line 11-45 to 2 AM Etah time
- 15 E. coming in with bear 195-11
- 16 Bear on sledge (W) 25-16
- 17 Bears head 50-16
- 18 Down the Coast from pass 10-22
- 19 Pigat Point 25-16

Roll 8

- 1 My cairn at Doges Point 25/16
 - 2 Peaks and snow covered slope
3: near
 - 4 High Peak near east camp
 - 5 6 Labyrinth Inlet 1/5 - 45
 - 2 Snow base tracks 25-32
-

Roll 9

- 1 Looking S.W. from end Museum Glacier 5-45
 - 2 " " " " " " " 5-45
 - 3 Front of Museum Glacier 10-45
 - 4 Panorama of Museum Glacier
 - 5 from a berg about 8 miles R
 - 6 Shore B 25-22
-

Roll 10

5-32

- 1 Large Berg from which pictures were taken
- 2 Bear tracks 5/32
- 3 " " 25-16
- 4 Midnight Sun 200-22 (20 min) 11 - 140
- 5 Sun down at 12-30 (between 5 & 6 hrs)
- 6 New Inlet 25-22
- 7 " " 25-22

2050 steps

31 min

$$\begin{array}{r} 2.5 \\ \hline 10.40 \\ 4.16 \\ \hline \end{array}$$

$$\begin{array}{r} 227) 500.00 \\ \underline{454} \\ 460 \\ \underline{454} \\ 6 \end{array}$$

$$5250 \overline{) 52000.0}$$

$$\begin{array}{r} 2580 \\ \hline 12900 \\ 51600 \\ \hline 64500 \\ 3280 \\ \hline 1170 \end{array}$$

$$\begin{array}{r} 359 \ 59 \ 60 \\ \hline 297 \ 40 \ 30 \\ \hline 72 \ 19 \ 30 \end{array}$$

$$\begin{array}{r} 179 \ 59 \ 60 \\ \hline 72 \ 19 \ 30 \\ \hline 107 \ 40 \ 30 \end{array}$$

500
350

4 spans + 4 feet

Roll X 1

- 1 Puget Point 25-22
- 2 " " 25-22
- 3 Northern side Cadogan Inlet
- 4 Coming down Snow Bank C. Saline 50-11
- 5 Kane flag 15-16
- 6 Harvard 15-16

16-82

16-93

2

4

50	2640
0	2640
<u>2500</u>	<u>2500</u>
	140

1037	2640	12.54
	<u>1178</u>	
	5620	
	<u>1178</u>	
	4220	

Paired Roof mile

1077	2640.00	2.2
	<u>1205</u>	
	5620	
	<u>1178</u>	
	4220	

1038	396
	<u>20</u>
	1980
	<u>792</u>
	1998

2m 3ⁱⁿ .20" 2 step 398 = 1000 feet

2	<u>5290</u>	400	2640	52
			<u>2000</u>	
50	2640	52		
	<u>250</u>			
	140			
	<u>140</u>			
	4			



